

AWOKEN ICON THEME

Installation & Customizing Instructions

Alessandro Roncone

mail: alecive87@gmail.com
 homepage: <http://alecive.deviantart.com/>
 Awoken homepage (GNOME Version): [link](#)
 kAwoken homepage (KDE Version): [link](#)

Contents

1	Iconset Credits	3
2	Copyright	3
3	Installation	3
3.1	GNOME	3
3.2	KDE	4
4	Customizing Instructions	4
4.1	GNOME	4
4.2	KDE	5
5	Overview of the customization script	6
5.1	How to customize a single iconset	7
6	Customization options	8
6.1	Folder types	8
6.2	Color-NoColor	11
6.3	Distributor Logos	11
7	How to colorize the iconset	12
8	Icons that don't want to change (but I've drawn)	13
9	Conclusions	14
9.1	Changelog	14

Preamble

Please consider a small donation (1\$ goes a long way) via PayPal to alecive87@gmail.com.

This is a full iconset token-style. It has over 15000 icons, so I think that your desktop experience is significantly changed using it.

Please feel free to report any bug you'd find, or icon you'd expect to be included in it.

Features: This icon set comes with three different, ready-to-use themes: *AwOken*, *AwOkenDark*, and *AwOkenWhite*. As suggested by their names, AwOken is the classic monochrome grayish version, AwOkenDark is the black flavour, and AwOkenWhite is the white declination. Furthermore, inside the pack there is a customization script that give the possibility to choose:

- 100^3 colors
- 123 distributor logos (this number is growing according to the requests)
- 46 folder types
- the possibility to switch between a colored version and a pure monochrome minimal experience

In this pdf I show options provided in the customization script, to take advantage of the main feature of this set: the possibility to *customize* it :D

Sorry for the bad resolution of the images given: real icons are better, but L^AT_EX doesn't render png images properly.

1 Iconset Credits

Credits go to:

arobase ([Main Project \[Elegant GNOME Pack\]](#)): for the help that gave to me explaining how to build a deb package and to maintain a ppa (and it gave hours of time!)

deusnova ([DA page](#)): for some tray icons, index.theme, for the disposability to help me with some issues, and above all for giving me the possibility to insert those awesome folders that are The Last Amazing Grays folders! :D

brsev ([DA page](#)): for the idea to develop such a wonderful iconset

switzak ([Main Project \[ACYL icon theme\]](#)): some icons are modified from his iconset

bluepal ([DA page](#)): for gedit icon

Thvg ([DA page](#)): for drives

MerlinTheRed ([DA page](#)): for weather icon templates

Milozzy ([DA page - \(very useful\) blog about Linux installations on netbooks - in Italian](#)): for liferea icons, and general support

ipapun ([DA page](#)): some icons are modified from his iconset

no204ss ([DA page](#)): for his s11 folder icons

gurato ([DA page](#)): for his classy folder icons

burnsplayguitar ([DA page](#)): for his sonetto folder icons

untergunter ([DA page](#)): for his leaf folder icons

minimamente (minimac) ([DA page](#)): for his snowsabre folder icons

2 Copyright

Some rights are reserved. This work is licensed under a [Creative Commons Attribution-Share Alike 3.0 Unported License](#). TLAG folder types are licensed under a [Creative Commons Attribution-Noncommercial-No Derivative Works 3.0 License](#).

3 Installation

3.1 GNOME

There are two possibilities to install this set:

Downloading it from DeviantArt page Download the iconset from the [link](#) provided in the first page of this pdf, move it into your desktop, extract the archive via right click menu → *Extract here*, then do the same with the two newer archives that appear. Now type in a terminal window:

```
cd Desktop
mv AwOken ~/.icons
mv AwOkenDark ~/.icons
mv AwOkenWhite ~/.icons
```

Now you can start customizing your iconset the way you want. You'd find very useful the instructions shown below. Once you have applied your customizations, you can select any of the AwOken iconsets with usual methodologies. Thus, if you have GNOME2, you only have to go to: *System* → *Preferences* → *Theme* → *Customize* → *Icons*, then select AwOken from the menu. If you are a GNOME3 user, you have to install `gnome-tweak-tool`, then go in the "Theme" tab and choose your iconset.

Using the ppa From the 1.1 Version, I maintain a *ppa* (Personal Package Archive), to always get users synchronized with the latest updates of the set. So it's strongly recommended using this installation type. The usage is very simple:

```
sudo add-apt-repository ppa:alecive/antigone && sudo apt-get update
sudo apt-get install awoken-icon-theme
```

This will install the iconset in `/usr/share/icons` folder, so the directory is different from the usual installation through DeviantArt.

Now you can start customizing your iconset the way you want. You'd find very useful the instructions shown below.

WARNING: with ppa subscription you can always get the newest version on your machine. But to see the improvements, you have to configure (or re-configure) at least once the iconset either for clear version, or dark version, or white version, or even a colored one.

3.2 KDE

From 1.1 version of kAwOken iconset, there are two possibilities:

DeviantArt download Download the iconset from the [link](#) provided in the first page of this pdf.

Extract the archive you downloaded, then *System Settings* → *Application Appearance* → *Icons* and click the *Install Theme File* button. Then, click the *Open file dialog* button on the right of the location text entry, select the **kAwOken.tar.gz** file you just extracted, and click the *Ok* button. To install also kAwOkenDark and kAwOkenWhite iconset, you will have to iterate the same procedure.

Using the ppa From the 1.1 Version, I maintain a *ppa* (Personal Package Archive), to always get users synchronized with the latest updates of the set. So it's strongly recommended using this installation type. The usage is very simple:

```
sudo add-apt-repository ppa:alecive/antigone && sudo apt-get update
sudo apt-get install kawoken-icon-theme
```

This will install the iconset in `/usr/share/icons` folder, so the directory is different from the usual installation through DeviantArt.

Now you can start customizing your iconset the way you want. You'd find very useful the instructions shown below.

WARNING: with ppa subscription you can always get the newest version on your machine. But to see the improvements, you have to configure (or re-configure) at least once the iconset either for clear version, or dark version, or white version, or even a colored one.

4 Customizing Instructions

4.1 GNOME

There is a simple terminal command that you have to type to have all customizing options in one. This ease the process of customizing and configuring the set.

PPA Installation

Just type in a terminal window:

```
awoken-icon-theme-customization
```

Now it will open an interactive script that allows you to change your configuration.

DeviantArt Download

If you downloaded the set from DA, you must place the script in `/usr/bin` folder. So type in a terminal window:

```
cd ~/.icons
sudo cp -p AwOken/awoken-icon-theme-customization /usr/bin/
sudo cp -p AwOken/awoken-icon-theme-customization-clear /usr/bin/
sudo cp -p AwOkenDark/awoken-icon-theme-customization-dark /usr/bin/
sudo cp -p AwOkenWhite/awoken-icon-theme-customization-white /usr/bin/
```

From now, the script can be recalled simply typing in a terminal window:

```
awoken-icon-theme-customization
```

Now it will open an interactive script that allows you to change your configuration.

Recommended Packages

To exploit full power of customization script, be sure to have **zenity** and **imagemagick** installed. Zenity is optional and is used to draw the GUI, but imagemagick is mandatory and is used in the colorization script. If you use Ubuntu, they're in repositories, so you have only to install them from Software Center.

4.2 KDE

Open a terminal/konsole (or whatever you prefer) and type (**WARNING:** the quotes shown in the first command below are not properly rendered in a pdf; to use the correct command please visit the deviantart page [\[link\]](#)):

```
cd 'kde4-config --localprefix'/share/icons
sudo chmod +x -R kAw0ken*
sudo cp -p kAw0ken/kawoken-icon-theme-customization /usr/bin
sudo cp -p kAw0ken/kawoken-icon-theme-customization-clear /usr/bin
sudo cp -p kAw0kenWhite/kawoken-icon-theme-customization-white /usr/bin
sudo cp -p kAw0kenDark/kawoken-icon-theme-customization-dark /usr/bin
```

From now, the script can be recalled simply typing in a terminal window:

```
kawoken-icon-theme-customization
```

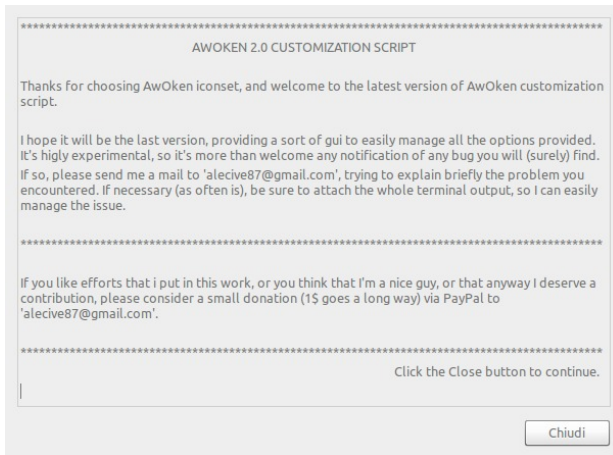
Now it will open an interactive script that allows you to change your configuration.

Recommended Packages

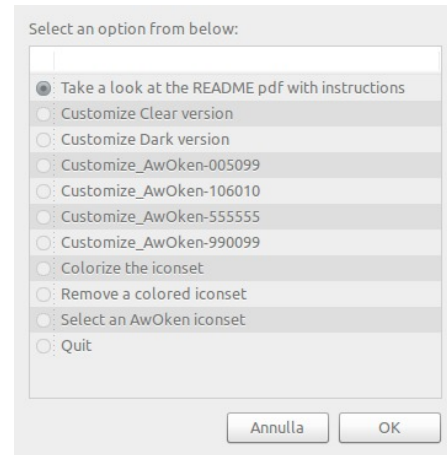
To exploit full power of customization script, you need **zenity** (optional, used to see the GUI - in a next future I'll port all the script to kdialog) and **imagemagick** (mandatory, used to color icons). If you use Debian-based distro, they're in repositories.

5 Overview of the customization script

From 2.0 Version of the set, I implemented a zenity interface, to provide a sort of GUI to further ease the process of customization. So, if you have zenity installed, you may see something like Figure 11.1 (exact text may change from version to version). Clicking the close button on the bottom right part of the window, you will see a new window from which you can choose what to do. Something like Figure 11.2.



1.1 First screenshot.



1.2 Second screenshot.

Figure 1: Screenshots of the zenity interface.

Without zenity, you anyway have the possibility to customize the iconset, but in this case you will have to use a command-line interface. You would get something like this in your terminal window (exact text may change from version to version):

```
*****
Initial settings. Current Release: 2.3

Please consider a small donation (1$ goes a long way) via PayPal to 'alecive87@gmail.com'
*****
WARNING: Zenity not found. Please install zenity to use this script from 2.0 Version.
    Anyway, I'll run the script in the old terminal fashion.
Installation directory -> /usr/share/icons/AwOken
Installation modality -> ppa
*****
Now I'll search if there are already colored iconsets in your /home/alecive/.icons directory.
I found these: AwOken-005099 AwOken-106010 AwOken-990099
Select an option of choice from below:
 1) TAKE A LOOK AT THE README PDF with instructions
 2) Customize Clear version
 3) Customize Dark version
 4) Customize White version
 5) Customize_AwOken-005099
 6) Customize_AwOken-106010
 7) Customize_AwOken-990099
 8) Colorize the iconset
 9) Remove a colored iconset
10) Select an AwOken iconset
11) Quit
What option do you prefer?
```

To select an option, just type the number of your choice.

For both modalities, here's a quick explanation of options provided (even if they are quite self-explaining):

TAKE A LOOK AT THE README PDF with instructions ⇒ This will, simply, open this file.

Items from 2 to 7 ⇒ From 1.95 version, you can select between a lot of different iconsets and customize each of them independently: these items let you customize one iconset of choice. The number of these items is growing according to the number of different colored iconset you made: as you can see, there are three fixed items (i.e. *Clear*, *Dark* and *White* customization script), and then other items that mirror the different iconset I've created with the colorization option. Check Section 7 for colorization option, and check Section 5.1 and 6 for help in customization script.

Colorize the iconset ⇒ With this option, you can colorize AwOken iconset, choosing between 10^6 different colors. Check Chapter 7 for more informations about this.

Remove a colored iconset ⇒ If you are bored with a colored iconset, or you think that the color you chose is not so cool, you can select this option and remove all the stuff related to that iconset. If the iconset you want to remove is your current iconset, the script will give you the possibility to choose another iconset (obviously, only awoken-related! ;)).

Quit ⇒ close the script and terminate the customization process.

5.1 How to customize a single iconset

If you chose to customize an iconset (the clear, the dark, the white or a colored one), you should see – if you have zenity installed – a window similar to Figure 2:

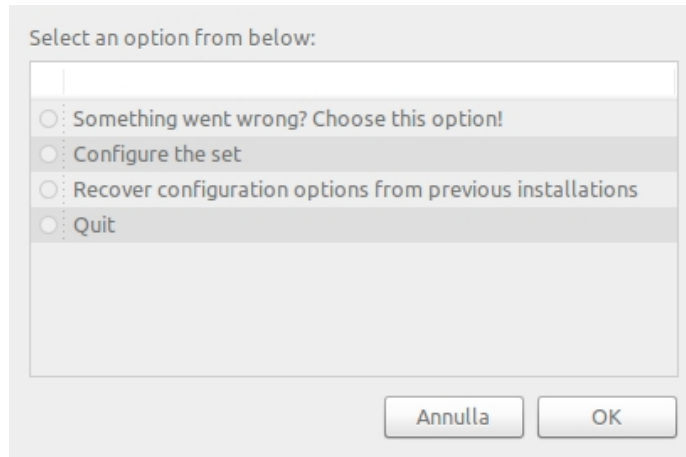


Figure 2: Screenshots of the zenity interface.

Otherwise, without zenity, the terminal output should look as below:

```
*****
Customization script for AwOken icon set. Current Release: 2.0

*****
Select an option from below (type the number of your choice):
1) Something went wrong? Choose this option!
2) Configure the set
3) Recover configuration options from previous installations
4) Quit
Wich option do you prefer?
```

For both modalities, there are these options:

Something went wrong? Choose this option! ⇒ Select this option if there's any problem with AwOken iconset. The script will automatically try to fix them.

Configure the set ⇒ Select this option if you want to customize the iconset of choice. As said above, you can change a lot of options: check Section 6 for further informations.

Recover configuration options from previous installations ⇒ Select this option if you installed AwOken iconset from ppa, and you want to update your iconset because you've just downloaded a newer version of AwOken.

Quit ⇒ close the script and terminate the customization process.

6 Customization options

6.1 Folder types

There are a lot of different folder types included in the iconset. Below, you can see 10 macro-types of folder options; note that images below are only examples: for each type there is a choice of 34 different icons which you can use to customize some folders [for example folders in the home directory] and get a better look and feel. To get an idea, just go to the `clear/128x128/places` directory, and see them! From 1.6 version, you can see folder icons directly in the customization script, so you have not to go manually in the previous directory. Note that from 2.4 version the folder structure (ie types and subtypes) experienced a drastic redesign, to improve either the script and the iconset both from the point of view of the order and of the consistency.



Figure 3: Macro-types of folder options

Most of these options (i.e., `awoken`, `classy`, `leaf`, `original`, `s11`, `snowsabre`, `sonetto`, and `tlag`) gives the possibility to a further customization of the set, since for those macro-types there are also other sub-types to choose from. For `metal` and `token` types instead there is no further choice. Below there are examples of sub-types for each macro-type available.

AwOken sub-types AwOken type is included from version 2.4. It includes AwOken folders, a new folder concept specifically designed for AwOken icon set. It's thought to cover some lacks derived from folders currently available, both in color and in style availability. Even if it's quite obvious, `awokenclear`, `awokendark` and `awokenwhite` colors were designed to match three default AwOken iconsets, namely AwOken, AwOkenDark and AwOkenWhite (for more informations, please check the [official homepage](#)). AwOken folders come with 10 different flavours:



Figure 4: Sub-types of awoken folder icons

Classy sub-types Classy option gave the possibility to choose between 9 different sub-types. Unfortunately, from 2.4 version the availability of some of them was reduced to only 5 since the inclusion of awoken macro-type brought some problems in the size of the iconset. So, to avoid an exponential increase of iconset size, some subtypes were removed. Below you can see the 5 sub-types who “survived”:



Figure 5: Sub-types of classy folder icons

Leaf sub-types Choosing leaf, you can use 5 different sub-types. Options list is shown below:



Figure 6: Sub-types of leaf folder icons

Original sub-types Also original macro-type is included since version 2.4. But this is only a bare reorganization of some previous folder types already available. Actually, these are the very first folders designed for awoken iconset, that have been “downgraded” since the introduction of awoken macro-type.



Figure 7: Sub-types of original folder icons

Snowsabre sub-types snowsabre option let the user to choose between 2 sub-types. Options list is shown below:



Figure 8: Sub-types of snowsabre folder icons

s11 sub-types Choosing `s11` or `s11-original`, you can use 8 different normal folders, that change only for a small detail on the right (and make them very cool! :D). Options list is shown below:

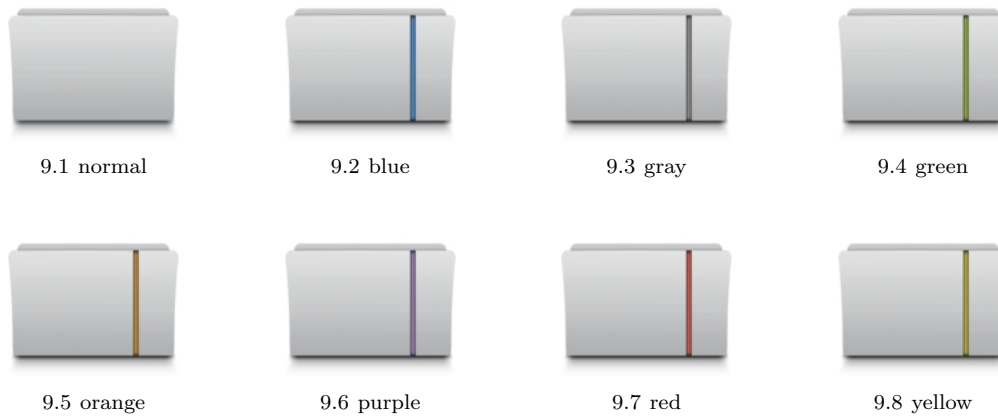


Figure 9: Folder-types of `s11*` folder icons

Sonetto sub-types Choosing `sonetto` option, you can use 11 different normal folders, that changes for the decorations inside them. Options list is shown below:

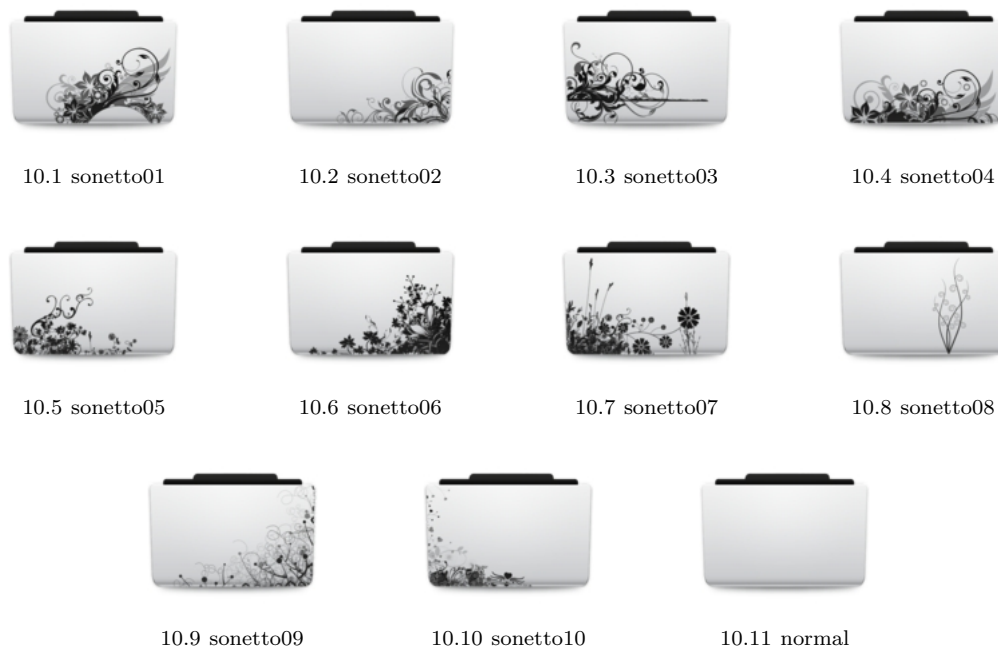


Figure 10: Folder-types of `sonetto` folder icons

Tlag sub-types Tlag is an acronym, and stands for *The Last Amazing Grays*. It's a concept by deusnova, and lets the user to choose between 2 sub-types, as you can see below:

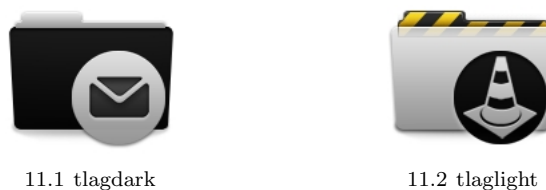


Figure 11: Sub-types of `snowsahre` folder icons

6.2 Color-NoColor

1.0 Version came with the possibility to change with a single command most of the icons from colored to grayed. From 2.5 version and subsequent versions, this feature is significantly increased, and the iconset now comes with a full-featured colored version, in which the majority of the most common applications is colored by default (even though it maintains its minimal approach). This option comes in help in the moment in which an user wants to switch to the typical old monochrome version.

By now, this option affects more or less 300-400 icons; I don't list them, but the icons that change are mainly apps icons (for example, firefox, ubuntu-software-center, gedit, evince) or actions icons (add, remove, call-start, info, help-faq, ..), even though the latter icons usually comes with only a part of them colored. home icon, computer icon and similar are affected as well.

To give an idea of this features, here is a quick glance of the two options side-by-side: icons on the left are available under the `color` option, icons on the right are loyal to the typical `no-color` option.



Figure 12: Icons available under the `color` option.

Figure 13: Icons available under the `no-color` option.

With further developments, I'll enlarge the number of icons that are able to change color. So, stay tuned with this option.

The options are the simplest:

- `color`
- `no-color`

6.3 Distributor Logos

By now, there are 123 different distributor-logo icons to choose between. The number is continuously increasing, according to new requests and to new ideas for cool start-here icons. If you have any suggestion, please feel free to ask me!

Also here, I don't list all icons, but I suggest to see them in the proper folder and choose the best. There is an option in the customization script to do this.

7 How to colorize the iconset

Colorization script itself is simple, and needs only few commands to work. But they're still quite tricky, due to the difficulties in understanding subtle layers of functioning. Basically, the only command needed (this is also its power) is the specification of the color with wich you want to color the iconset. The script intensively uses Imagemagick ¹ `convert` command, with the option `-colorize`. Here's a quick explanation of this option:

`-colorize value`

Colorize the image by an amount specified by *value* using the color specified by the most recent `-fill` setting.

Specify the amount of colorization as a percentage. Separate colorization values can be applied to the red, green, and blue channels of the image with a comma-delimited list of colorization values (e.g., `-colorize 0,0,50`).

So, to colorize the iconset you have to specify the amount of colorization of percentage (i.e. a number within the range [0 100]) for each **CMY** (*Cyan Magenta Yellow*) channel.

From version 2.4, in the script was included the conversion between RGB (*Red Green Blue*) color space to CMY color space; this allow the user to use RGB codes (that are easily understandable and manageable rather than CMY percentages). When asked, user has to type codes **separately**, i.e. like this:

1. Type the R code
2. Press "Enter"
3. Type the G code
4. Press "Enter"
5. Type the B code
6. Press "Enter"

Here are some examples (with related **R-G-B** codes):



Figure 14: Example of colorized icons.

After waiting a bit (colorizing over 12k icons is not so quick, even if from 2.4 version this aspect was drastically improved), there will be a new iconset called with the RGB code of choice (ie, if you chose 100-50-150 [it's a dark violet] the entry will be `AwOken-100050150`). Recall that **each colored iconset can be customized independently**.

WARNING1: Actually, colorization script doesn't pick a color of choice and use it to "exactly" color icons, but it use a pre-existing icon-set (namely, AwOken classic) and color it with the hue you picked up. So, there's not a chance to see the exact color you chose, since the result will be always darker than your choice. Basically, picking for example the 255-255-255 RGB code (that stands for the perfect white), will result in having an iconset exactly identical to AwOken classic (and the same applies to other colors).

WARNING2: Colorization script doesn't color most of the folders (since they're too complicated to automatize colorization process). If you want to get a folder in style with the color of choice, you have to choose **token** folders: they're the one wich color changes accordingly to the color of choice. Anyway, token folders are selected by default.

¹<http://www.imagemagick.org/script/index.php>

8 Icons that don't want to change (but I've drawn)

Due to programmers lacks, there are some apps that doesn't respect system specifications, and whose icon has to be replaced by hand. So, in this chapter I write a list (increasing over the time) of these apps, with the path to the icon that they use (if you eventually change it by hand).

<i>Application</i>	<i>Icon Path</i>
BLUEDUN	/usr/share/bluedun/data/bluedun.svg
FOTOXX	/usr/share/fotoxx/icons/fotoxx.png
GOLDENDICT	/usr/share/pixmaps/goldendict.png
PDFEDIT	/usr/share/pdfedit/icon/pdfedit_logo.png
LMMS	/usr/share/lmms/themes/default/icon.png
HPLJ1020	/usr/share/pixmaps/hplj1020_icon.png
ONBOARD	/usr/share/icons/hicolor/scalable/apps/onboard.svg
ONBOARD-SETTINGS	/usr/share/icons/hicolor/scalable/apps/onboard.svg
PYTHON (2.7 and older)	/usr/share/pixmaps/python2.7.xpm
UEXTRAS	/usr/share/pixmaps/uextras.xpm
GCOLOR2	/usr/share/pixmaps/gcolor2/gcolor2.xpm
JUPITER	/usr/share/pixmaps/jupiter/jupiter.png
GSHUTDOWN	/usr/share/pixmaps/gshutdown.png
PYRENAMER	/usr/share/pyrenamer/pyrenamer.png
MINTINSTALL	
FFDIAPORAMA	/usr/share/ffDiaporama/img/logo.png
PICASA	/opt/google/picasa/3.0/desktop/picasa32x32.xpm
XGPS	/usr/share/gpsd/gpsd-logo.png
XGPSSPEED	/usr/share/gpsd/gpsd-logo.png
NETBEANS	
NITROTASK	
QT ICONS	
XDIAGNOSE	/usr/share/xdiagnose/icons/microscope.svg
TASTEBOOK	/opt/extras.ubuntu.com/tastebook/share/pixmaps/tastebook-icon-128.png
DRAWERS	/opt/extras.ubuntu.com/drawers/share/drawers/media/drawers.svg
FOGGER	/opt/extras.ubuntu.com/fogger/share/fogger/media/fogger.svg
LIGHTREAD	/opt/extras.ubuntu.com/lightread/share/icons/hicolor/128x128/apps/lightread.png
STORMCLOUD	/usr/share/stormcloud/media/stormcloud.svg

9 Conclusions

I hope this pdf will be useful for all that don't have familiarity with terminal commands, and will help them in the process of customizing the iconset.

Sorry for my english, and sorry if in this file and in the customization script there are errors and bugs (because there are surely).

So, if you find a bug here, in the customization script or in the iconset, you're more than welcome to report me anything could be useful to get a better iconset. Choose the way you prefer: gnome-look.org page, [deviantart](http://deviantart.com) page, mail.

And thanks to have come this far in the reading of the file! :D

9.1 Changelog

Version 2.5

- Added a **full-featured colored version!** More than 500 icons were re-drawn in colored mode.
- Changed licensing: **from cc-by-nc-sa to cc-by-sa!** Now the iconset is completely free :)
- Iconset updated to **Ubuntu 13.04 Raring Ringtail!**
- Added ppa for **Ubuntu 12.10 Quantal Quetzal** and **Ubuntu 13.04 Raring Ringtail**
- Solved a bug in **coloration script** (many thanks to shadowkyogre.deviantart.com)
- **Secure icons** are now available in `networkmanager`
- New **ubuntuone** icons, as well as new **emoticons** for chat
- Added more than **50 xfce4 icons**
- Added icons for **gnome 3.8 applications**: `gnome-games`, `gnome-documents`, `gnometris`, `quadrapassel`, `gnome-boxes`, `gnome-disks`, and more
- Added or redrawed **more than 400 icons**
- Added more than **200 symbolic icons**
- Dropped ppa for `Ubuntu 10.04 Lucid Lynx`, `Ubuntu 10.10 Maverick Meerkat`, `Ubuntu 11.04 Natty Narwhal`

Version 2.4

- Added **AWOKEN folders!** Now the set is integrated with the most cool and stylish folders ever!
- **Drastic revision of mimetypes**: now they use a different template icon (modified from Elementary icon set), and they're more refined in 24x24 version!
- **Most of the 22x22 actions icons that have characterized the latest versions have been brought to 24x24px and 128x128px resolutions.** So the iconset become cleaner, cooler and more integrated! Consequently, also some status icons are changed.
- **Mail icons redrawed** (both in bigger and in lower resolution). Now your favourite email client's toolbar (except thunderbird) works like a charm!
- Added ppa for precise.
- **Drastic revision of the colorization script**: now is faster, cleaner and supports parallel processing. This lead to a serious improvement on latest multi-core machines, but also on elder computers. Another big improvement is related to the fact that is now accepting **RGB colors instead of CMY colors!**
- **Revision of the Installation and Instructions PDF file.**
- **Removed gedit choice from the customization script** (it's useless having the possibility to change only one icon!).
- **Removed some folder sub-types**, since the iconset is became too big. They are `classy-yellow`, `classy-carboard`, `classy-white`, `classy-black`. For the same reason, removed (from other folder types) `folder-joomla`, `folder-wip`, `folder-science2`, `folder-windows`, `folder-apple`, `folder-ffw`, `folder-byte`, `folder-cd`, `folder-fonts`, `folder-linux1`, `folder-linux2`, `folder-public`, `folder-important`.
- **Application added (or redrawed)**: `accessories-text-editor-symbolic`, `document-open-symbolic`, `network-wired-disconnected`, `ubuntuone emblems`, `gtk-zoom-100` in 22x22px, `jdownloader`, `gwibber`, `mail-message-new`, `mail-forward`, `mail-outbox`, `mail-mark-important` (-junk, -notjunk, -unread, -spam), `mail-reply`, `mail-reply-all`, `mail-move`, `edit-delete-mail`, `extract-archive`, `add-files-to-archive`, `add-folder-to-archive`, `gnome-pie`, `gelemental`, `luminance-hdr`, `application-x-mint`, `grooveshark`, `mintinstall`, `addressbook icons`, `call-start`, `call-stop`, `fillmore`, `gpick`, `gftp`, `batti`, `marlin`, `kompozer`, `preferences-desktop`, `preferences-system`, `preferences-desktop-personal`, `mime for video`, `midori`, `djvulibre`, `plank`, `fontforge`, `ffanvil`, `general settings icons`, `kupfer`, `acetoneiso`, `videoporama`, `beatbox`, `nvclock`, `cryptkeeper`, `bino`, `isomaster` (I hope), `gpixpod`, `graveman`, `gshutdown`, `ogmrip`, `billardgl`, `foobillard`, `fedora live usb`, `mp3-splt-gtk`, `yarock`, `scim-setup`, `application-fonts`, `mono-runtime`, `gnome-settings-default-applications`, `nitrogen`, `musique`
- **Application added (or redrawed) specifically for KDE version**: `application-x-tarz`, `imagewriter`, `script-error`, `code-context`, `edit-link`, `view-group`, `edit-select`, `select-rectangular`, `zoom-select`, `insert-text`, `select.rectangular`, `run-build-install-root`

Version 2.3

- **AWOKENWHITE ICONSET RELEASED!** Now it's possible to choose between three different iconsets by default: **AwOken**, **AwOkenDark**, and **AwOkenWhite!**
- *Complete revision of toolbar icons* (like gedit, kate and so on): now they are more stylish and uniform! For details see below.
- **New LIBREOFFICE icons!** They are available both in the colored and in the mono versions.
- *Revision of messaging icons* (status online and away)
- *Added ppa for oneirc*
- *Full support to Oneirc icons, and improved Gnome-Shell integration.*
- *Revision of the customization script:* now in the act of customizing a single iconset it's possible passing arguments (thanks to getopts). This capabilities will be extended to most of the scripts in future releases.
- *Application added (or redrawed):* muon, houdini, nuke, kdenlive, PsCS5, maya, mari, search_field, ardour, media-playback-pause in 22x22px (slightly smaller), mendeley, zbrush, preferences-desktop-display, category-show-all, gsd-xrandr, preferences-color, text-x-apport, libpeas-plugin, goa-panel, goa-twitter, goa-facebook, goa-google, goa-yahoo, insert-link, locationbar-erase, system-upgrade, visualization, view-refresh, orca, aptdaemon-resolve, fullscreen, no-fullscreen, view-page-continuous, view-page-facing, system-upgrade, document-edit, document-export, document-import, document-new, document-print-preview, document-page-setup, edit-copy, edit-paste, filenew, gtk-file, gtk-dnd, gtk-dnd-multiple, edit-select-all, document-preview-archive, go-previous-view-page, go-next-view-page, go-last-view-page, go-first-view-page, touchpad-disabled, edit-undo, edit-redo, document-open, tab-close, window-close, tab-open, window-open, search, search-and-replace, input-tablet, input-dialpad, mail-inbox, eog, hwbrowser, applications-arcade, category-show-all, drive-harddisk-system, fork, empty-trash, indicator-weather, get-hot-new-stuff, indicator-virtualbox, tomboy-panel, note-taking applications in smaller dimensions (22x22 px), emblem-shared, teamviewer, beaver, object-rotate-left, object-rotate-right, object-flip-horizontal, object-flip-vertical
- **KDE version:** Improved integration (small issues fixed, new apps [see above] added).
- **KDE version:** Added PPA support for debian-based distro! Since for KDE is not so important having a deb package (the KDE tool for installing icons works quite well), for now only oneirc support is provided. If the feedback will be good, maybe I'll add some backward support.
- **KDE version:** *Revision of the Installation and Instructions PDF file.*

Version 2.2

- *Complete support to Gnome-Shell tray icons* (i.e. *gnome-icon-theme-symbolic*)
- *Revision of most of the iconset*, with fully revamped **AUDIO** icons, **NETWORK** icons, **BATTERY** icons and **ARROW** icons!!!
- As usual, *corrected some bugs in the customization script and revisited the Installation and Instructions PDF file* (to meet KDE users' necessities)
- Corrected bug in KDE version related to colorization of *qutim-message-new* and *kwindows*
- **Added 371 new icons in small sizes (22x22 px):** accessibility-directory, add, amarok, application-exit, applications-chat-panel, arrow-down, arrow-down-double, arrow-left, arrow-left-double, arrow-right, arrow-right-double, arrow-up, arrow-up-double, bluedun, blueman, blueman-tray, blueradio-48, bluetooth, bluetooth-active, bluetooth-active, bluetooth-disabled, bluetoothradio, browser-download, button_cancel, cancel, chronometer, dialog-apply, dialog-cancel, dialog-close, dialog-error, dialog-error, dialog-information, dialog-no, dialog-ok, dialog-ok-apply, dialog-question, document-properties, document-revert, document-send, down, download, download-amarok, dust-tab-close-active, dust-tab-close-active-hover, dust-tab-close-inactive, dust-tab-close-inactive-hover, edit-delete, edit-redo, edit-redo-amarok, edit-undo, edit-undo-amarok, ejecter, encode, epiphany-download, error, error, exit, folder-documents-symbolic, folder-download-symbolic, folder-music-symbolic, folder-pictures-symbolic, folder-remote-symbolic, folder-saved-search-symbolic, folder-start-symbolic, folder-templates-symbolic, folder-videos-symbolic, gnome-info, gnome-settings-accessibility-technologies, gnome-status, gnome-tourist-info, go-bottom, go-down, go-first, go-jump, go-last, go-left, go-next, go-previous, go-right, go-top, go-top, go-up, gtk-add, gtk-apply, gtk-cancel, gtk-close, gtk-fullscreen, gtk-go-back-ltr, gtk-go-back-rtl, gtk-go-down, gtk-go-forward-ltr, gtk-go-forward-rtl, gtk-goto-bottom, gtk-goto-first-ltr, gtk-goto-first-rtl, gtk-goto-last-ltr, gtk-goto-last-rtl, gtk-goto-top, gtk-go-up, gtk-info, gtk-jump-to-ltr, gtk-jump-to-rtl, gtk-leave-fullscreen, gtk-media-forward-ltr, gtk-media-forward-rtl, gtk-media-next-ltr, gtk-media-next-rtl, gtk-media-pause, gtk-media-play-ltr, gtk-media-play-rtl, gtk-media-previous-ltr, gtk-media-previous-rtl, gtk-media-record, gtk-media-rewind-ltr, gtk-media-rewind-rtl, gtk-media-stop, gtk-missing-image, gtk-missing-image, gtk-no, gtk-quit, gtk-redo-ltr, gtk-redo-rtl, gtk-refresh, gtk-remove, gtk-revert-to-saved-ltr, gtk-revert-to-saved-rtl, gtk-stop, gtk-undo-ltr, gtk-undo-rtl, gtk-yes, gtk-zoom-100, gtk-zoom-fit, help-browser, help-browser, help-contents, image-loading, image-loading, image-missing, info, info-amarok, insert-pause, last-page, list-add, list-remove, list-remove, mail-replied, media-eject, media-playback-pause, media-playback-pause, media-playback-stop, media-record, media-repeat-none, media-seek-backward, media-seek-forward, media-skip-backward, media-skip-forward, menu_new_sep, minus, next, nicotine, notification-audio-next, notification-audio-pause, notification-audio-play, notification-audio-previous, notification-audio-stop, notification-device-eject, notification-properties, object-flip-horizontal, object-flip-vertical, object-rotate-left, object-rotate-right, opera22x22, pitivi-render-22, playlist-layouts-22, preferences-desktop-accessibility, previous, printer-error, printer-printing, printer-warning, process-stop, redo, reload, reload3, remmina-leave-fullscreen, remmina-scrolled-fullscreen, remmina-viewport-fullscreen, remove, remove-amarok, revert, rotate, start, stock_about, stock_bottom, stock_calc-accept, stock_calc-cancel, stock_close, stock_delete, stock_down, stock_first, stock_first-page, stock_fullscreen, stock_last, stock_leave-fullscreen, stock_left, stock_mail-filters-apply, stock_mark, stock_media-fwd, stock_media-next, stock_media-pause, stock_media-play, stock_media-prev, stock_media-rec, stock_media-rew, stock_media-stop, stock_no, stock_not, stock-properties, stock_redo, stock_refresh, stock_right, stock_stop, stock_top, stock_undo, stock_up, stock_yes, stock_zoom-1, stock_zoom-in, stock_zoom-out, stock_zoom-page-height, stock_zoom-page-width, stop, system-about, top, tray-away, tray-busy, tray-invisible, tray-offline, tray-online, undo, up, user-available, user-available-panel, user-away, user-away-extended, user-away-panel, user-busy, user-busy-panel, user-extended-away, user-idle, user-idle-panel, user-indeterminate, user-indeterminate-panel, user-invisible, user-invisible-panel, user-offline, user-offline-panel, user-typing, view-far, view-fullscreen, viewmag1, viewmag, viewmag+, viewmagfit, view-near, view-refresh, view-restore, window-close, window_fullscreen, window_nofullscreen, xfce-system-exit, zoom-best-fit, zoom-fit-best, zoom-fit-height, zoom-fit-page, zoom-fit-width, zoom-in, zoom-original, zoom-out
- *Application added (or redrawed):* softwarecenter, applications-microblogging-panel, boxee, edit-clear, edit-cut, amazon-mp3-store-source, format-indent-more, format-indent-less, gtk-missing-image, view-services-ampache-amarok, audacious-panel, elegant-gnome, gnome-power-preferences, terminal icons, k3b, lastfm, y-ppa-manager, applications-education-university, battery (both in color and in no-color modality), media-flash, audio-x-generic-symbolic, network-server, security-low, security-medium, security-high, microphone-sensitivity-high, microphone-sensitivity-low, microphone-sensitivity-medium, microphone-sensitivity-muted, mode-browse, mode-image-edit, network-cellular-3g, network-cellular-4g, network-cellular-acquiring, network-cellular-connected, network-cellular-edge, network-cellular-gprs, network-cellular-signal-excellent, network-cellular-signal-good, network-cellular-signal-none, network-cellular-signal-ok, network-cellular-signal-weak, network-cellular-umts-symbolic, software-update-available, software-update-urgent, stock_attach, x, computerjanitor, conky, internet-telephony, emblem-downloads, emblem-system

Version 2.1

- In the customization script, *xdg-open* replaced *evince*, *nautilus* and *eog*: so it's possible reading pdf and viewing previews even if you have not such applications! Thanks to artasense for the tip!
- Darker version slightly darker :)
- Empathy icons in 16x16 size

- **New start-here icons** for (three icons for type): **xubuntu, kubuntu, lubuntu, chakra, kde**; added also a couple of **squared** start-here, three **umbrella** start-here, five **mageia** icons, and **three awoken icons designed for this application**. With them, the choice is between **120** different start-here icons!
- **Full support to *brasero* icons** (insert-pause, media-optical-audio-new, media-optical-copy, transform-crop-and-resize, iso-image-burn, media-optical-blank, media-optical-data-new, iso-image-new, media-optical-burn, media-optical-video-new), ***indicator-cpufreq***, and ***tombay*** icons
- Updated **Readme PDF**
- **Applications added (or redrawn)**: musicdownloadcenter, gnome-network-preferences, qcad, me-tv, fretuixtv, tvtime, bluefish.xpm, google-chrome-unstable, gnome-lightsoff, gmailwatcher, google-earth, gnome-gmail-notifier, gmail-notify, prism-gmail-notify, audiobook, as-icon, adobe-flashplugin, bug-buddy, qt, qtassistant, qtconfig, qtlinguist, qtdesigner, qtcreator, abrt, deja-dup, devede, flegita, glade, gnome-panel-launcher, gnome-session, library-internet-radio, libreoffice-main, libreoffice-template, mitter, openbravo-erp, openerp-client, partner, postr, screenie, screenie-qt, smuxi, speedcrunch, susers, sylpheed, wordpress, lastfm, banshee, liferea (and most of other rss icons), firefox, twitux, twitter, gtwitter, licq, im-icq, limewire, gimp, vlc, library-podcast, media_podcast, podcast, podcast-new, rhythmbox-podcast, thunderbird, homebank, wxbanker, system-file-manager, terminal and all icons related, firestarter, firewall icon, wine, wine-winecfg, wine-notepad, wine-winetricks, wine_doors, document-page-setup, fslint, document-preview, contact-new, worldofgoo, appointment-new, application-default-icon, window-preferences, window-new, playlist, playlist-new, source-smart-playlist, ekiga (and all icons related to calls), amarok, gnome-tali, x, xchat, xkill, xorg, webcam (and all icons related), cheese, gnome-cpu-frequency-applet (and indicator-cpufreq), kmpilot, applet-screenshooter (and all icon related), deluge, docky, gnome-remotedesktop, preferences-desktop-remote-desktop, d4x, jokosher, pcsx, tab-new, view-history, epiphany-history, history-view, notification-properties, ike, ike-qtgui, ikea, obconf, magnatune, jamendo, audacious-panel, format-indent-less, format-indent-more, mode-browse,
- **Applications added (for KDE compatibility)**: rekonq, kcheckgmail, kgmailnotifier, akregator, kbugbuster, kaffeine, kate, kedit, kflicker, kfm, kmail, kmousetool, kmplayer, knotes, kopete, korganizer, kplayer, kradio, ksnapshot, ktorrent, x_media_podcast, kwalletmanager, kcoloredit, colourpaint, kfind, kgpg, kmimes, knetworkmanager, cervisia, kapptemplate, kcachegrind, konqueror, kdevelop, kdif3, kimagemapeditor, klinkstatus, kommander, kompare, kuiviewer, kxslldb, umbrello, kig, kcolorchooser, kover, koverartist, kalarm, kmymail, ksane, kshutdown, ksudoku, ktimer, ktouch, kgrab, ksnapshot, kcall, kchart, kmenu, kruler, kwrite, tagua, nepomuk, continue-data-project, dashboard-show, document-edit, document-preview-archive, list-add-user, go-(first, next, previous, last)-view-page, im-ban-kick-user, im-invisible-user, im-user-away, im-user-offline, im-ban-user, im-kick-user, im-user-busy, im-user, insert-horizontal-rule, plasmagick, kahjongg, kpatience, ark, beagle, okular, kppp, kmix, synaptiks, quassel, dragonplayer, partitionmanager, kontakt, kmag, unknownapp, view-pim-contacts, view-presentation, view-media-lyrics, view-media-playlist, svn-commit, svn-update, webcamsend, webcamreceive, application-education-(mathematics, science, miscellaneous, preschool, language, school), applications-toys, applications-development-web, applications-development-translations, yakuake, semn, shell, edit-bomb, preferences-desktop-user-info, preferences-desktop-user-auth, preferences-desktop-color, preferences-desktop-filetype-association, preferences-desktop-kcal-constants, preferences-desktop-text-to-speech, preferences-desktop-display-color, user-info, preferences-windows-actions, preferences-windows-move, preferences-web-browser-adblock, preferences-web-browser-identification, preferences-web-browser-cache, preferences-web-browser-shortcuts, preferences-web-browser-cookies, preferences-web-browser-stylesheets, timevault, preferences-desktop-cryptography, mameexecutor, oxygen, localize, kthesaurus, kverbos, kfilebox, kde-telepathy, internet-telephony, akonadi, knewsticker, kspread, kernel, kjournal, device-notifier, kword, krita, ksycguardd, korgac, ktip, esd, karbon, karbon14, kivio, kplato, kolf, kblogger, kdf, krcd, ksniffer, kuickshow, qelectrotech, step, kgeography, calibre, blogilo, knode, kjots, ktimetracker, kleopatra, bangarang and all bangarang icons (bangarang-lastfm, bangarang-notifier, bangarang-notifier-active, bangarang-notifier-active-pause, bangarang-preview, bangarang-repeat, bangarang-shuffle, bangarang-tvdb), marble, kapman, ksnake, ksnakeduel, bovo, sweeper, kbruch, tab-duplicate, tab-detach, tab-new-background, tab-close, tab-close-other, table, view-form-table, archive-insert-directory, edit-web-search, help-contextual, im-aim, im-message-new, list-remove-user, window-suppressed, object-locked, kcm-gtk, kamoso, akonadiconsole, akregator-empty, application-sxw, bangarang-dbpedia, base, chakra-flat, chakra-shiny, chakra-smooth, cmake-guil, draw, facebookresource, gmail-plasmoid, impress, kdcraw, kde-windows, kdeapp, kdesnake, kgrubeditor, kipi, kmenuedit, kolab, freesoftwarecalendar, kopete-offline, korg-journal, korg-todo, kplato-work, ksplash, ktron, ktuberling, lancelet-start, lancelet, main, math, plasmaapplet-shelf, printeradmin, qtlogo, writer, kmess, view-filter, alignment icons (10 icons), view-file-columns, view-choose, view-list-icons, view-list-details, view-list-tree, view-left-close, view-pim-calendar, view-pim-mail, view-pim-contacts, view-pim-tasks, view-pim-journal, view-right-close, view-right-new, view-split-left-right, view-split-top-bottom, edit-rename, format-list-ordered, format-list-unordered, kmenuedit

Version 2.0

- **Great change in customization script**: now, for those who has zenity installed, it's possible configure the iconset through a very comfortable GUI!!! I'll upload as soon as possible a video to let users understand better its usage :)
- Replaced **grain folder icons** by *Untergunter* with the best of the best: **leaf folder icons** by *Untergunter* (4 different choices!!)
- Updated **README pdf** file to meet new changes in customization script, and added a new chapter to include a list of those applications that don't want to change their icon
- Added support for natty ppa
- Revamped support to karmic deb packages (it will be the latest version with ppa support for karmic)
- **Better Natty support**: gnome-workspace, kjobviewer, preferences-system-time, battery-good-charging, logviewer
- **Applications added (or redrawn)**: workspace-switcher, google chrome, firefox-trunk, ubuntuone, alltray, auteur, foobnix, kid3, pcmanfm-mod, sabnzbd, kdevelop, start-here-zenwalk (3 versions), distcc monitor, haguichi, orage (and prefs.), xfce4-clock, xfce-schedule, alarm-clock, bashare, bluedun, foxit reader, tor, openvpn, logjam, openbox, arora, djvulibre, darktable, fotowall, fotoxx, furiosisomount, gcdmaster, freespeak, hand-brake, midori, pdfedit, lmmms, gufw, minitubes, minitube, viewnior, vacuum-im, quitim, qjackctl, meld, grub-customizer, gstm, gx_head, postr, pdfmod, rakarrak, guitarix, tuxguitar, hydrogen drum machine, sk1, q4wine, tuxcommander, eiskaltdcpp, giver, fontmatrix, icecat, bzz, bonobo

Version 1.9

- **Great change in customization script**: added a lot of options to exponentially increase the customization options:
 - possibility to **create a colored iconset** choosing between 100³ different colors
 - possibility to **customize independently** each iconset (clear, dark & colored ones)
 - possibility to **choose your current iconset** between AwOken iconsets (clear, dark & colored ones)
 - possibility to **remove a colored iconset**
- Updated **README pdf** file to meet new changes in customization script
- **Full support to libreoffice**
- **printer icons** (gtk-print-error, gtk-print-report, gtk-print-warning, printer-printing, stock_print-setup), **usb pen icon**, **openoffice-new**, **gtk-convert**, **gtk-undelete-rtl**, **gtk-undelete-ltr**, **gtk-undelete**, **stock-undelete**, **emblem-downloads**, **gnumeric** in **no-color mode**
- **Applications added (or redrawn)**: dropboxstatus-busy2, audio-cd-duplicate, audio-cd-new, firestarter, gtk-convert, gtk-undelete-rtl, gtk-undelete-ltr, gtk-undelete, stock_undelete, edit-delete-mail, xchat-gnome, gtk-edit, stock_new-tab, stock_new-window, touchpad-enabled, touchpad-disabled, **all lock icons**, **messenger icons** (user-online, user-away, user-busy, user-extended-away with less transparency, user-typing with more contrast), appointment-missed, appointment-soon, avant-window-navigator, stock_new-template, stock_person, stock_new-labels, stock_new-drawing, stock_new-formula, stock_new-html, stock_new-labels, stock_new-master-document, stock_new-presentation, stock_new-spreadsheet, stock_new-text, stock_certificate, system-search, application-x-pdf, **all time and chronometer icons**, gnome-panel-notification-area, **synaptic and all the icons related to it**, stock_script, gnome-fs-regular, application-x-cd-image, gnome-search-tool, gnome-network-preferences, edit-find-replace, preferences-desktop-display, nm-secure-lock, checkgmail

- *Revision of mimetypes*: icons redrawn → application-x-trash, text-x-drawing, text-x-formula, text-x-html, text-x-presentation, text-x-spreadsheet, text-x-text, stock_certificate, system-search, application-x-pdf, all time and chronometer icons, gnome-panel-notification-area, synaptic and all the icons related to it, stock_script, gnome-fs-regular, application-x-cd-image, vmlinuz, gmome-mime-application-x-shockwave-flash, application-x-ms-dos-executable, audio-aac, audio-x-generic, audio-x-ms-wma, audio-ac3, audio-prs.sid, audio-x-matroska, audio-x-musepack, audio-basic, audio-vnd.rn-realaudio, audio-x-midi, audio-x-pn-realaudio-plugin, audio-midi, audio-x-adpcm, audio-x-mod, audio-x-scpls, audio-mp3, audio-x-aiff, audio-x-monkey, audio-x-speex+ogg, audio-mp4, audio-x-flac+ogg, audio-x-mp2, audio-x-vorbis+ogg, audio-mpeg, audio-x-flac, audio-x-mpegurl, audio-x-wav
- Solved little bug related to **folder-new** for *snowsabre* & *grain* folder types (I forgot to draw folder-new in 24x24px)
- Removed emblem-dock-icons (it's useless)
- No more support to karmic deb packages (it's obsolete)
- Renamed some start-here icons to meet script specifications (so check start-here folder to choose your favorite one)

Version 1.6

- Added **grain folder icons** by *Untergunter* (with 5 different possibilities), and **snowsabre folder icons** by *minimac* (two different types)! Say me if something goes wrong.. :)
- *Revision of the customization script*: **solved the annoying bug that forces you to run at least once the customization script to get the right look & feel**, implemented new structure to meet future extensions [such the darker version], fixed minor issues, and added the *possibility to view folder types directly inside the script!*
- **Full exaile support** (I hope)!!
- *Modified start-here icons for crunchbang* (slightly more rounded, even if I think that the different is quite not noticeable)
- **Added three new start-here icons** (start-here-circle2, start-here-circle3, start-here-circle4)!!
- *Applications added (or redrawn)*: rcommander, atunes, gfontssampler, epidermis, gmusicbrowser, bleachbit, synapse, guake, bazaar, skrooge
- Please tell me if some of these icons didn't change!

Version 1.5

- Added **Classy folder icons** by *Gurato* (with 9 different possibilities), **s11 folder icons** by *no204ss* (two different types, with 7 different folders to choose), **sonetto folder icons** by *burnsplayguitar* (with 11 different folder icons)! With them, it's possible to choose between 34 different folder types! Say me if something goes wrong.. :)
- *Revision of the customization script*: it's now possible to see directly icons to choose between within the script. This is possible for: start-here logos, computer icons, home icons, gedit icons, trash icons.
- *Revision of the pdf file*: now it's almost perfect.. Check it! :)
- **Added 3 new Computer icons and 3 new Home icons!** Try them! :)
- **Added folder-recent icons** (for those icons in wich this was possible) to fix an issue with docky
- **Added icons in a gray mode** (they change with the option 'no-color') for **scanner, printer, startup applications, media-eject, media-record, ubuntu-tweak**
- **Completed evolution icons** (preferences-autocompletions, preferences-system-network-proxy.png, preferences-composer.png, mail-inbox, mail-outbox, mail-sent, go-today)
- *Applications added (or redrawn)*: unison gtk, scribus, desktopnova, ultraedit, xmlcopyeditor (colored and grayish version!), remmina, terminator, krusader, jabref, freemind, cmake-gui, avogadro, rkward, IBM lotus symphony